

Historic, Archive Document

Do not assume content reflects current scientific knowledge, policies, or practices.

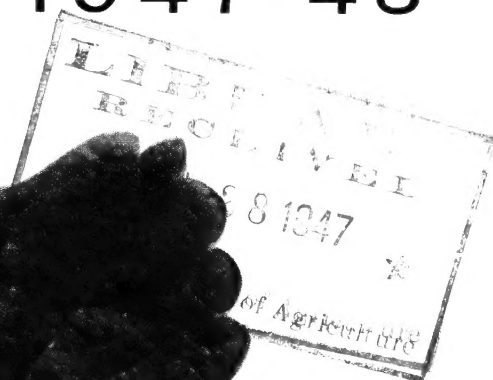
BERRY PLANTS

CATALOG
1947-48

STREAMLINER

Everbearing Strawberry

See Page 8



140 So. Carmelina Avenue,
LOS ANGELES 24, CALIF.

BRENTWOOD
BERRY
GARDENS



EVERBEARING CHERRY RED RHUBARB

CERTIFIED STRAWBERRY PLANTS

**We Are Exclusive Agent West of the Rockies for
MULLINS PLANT FARMS, Chattanooga, Tennessee**

The Mullins strains of strawberry plants, grown in virgin soil under ideal conditions in eastern Tennessee and carefully rogued to eliminate inferior and off type plants, assure you of the choicest, disease-free plants obtainable.

Dealers and growers, familiar with these and competitive plants, choose these even when competitive plants are offered at lower prices, as they want to be sure of what they are getting. **DON'T YOU?**

A leading nurseryman in Shenandoah, Iowa, told Mr. Mullins that east Tennessee produces the best strawberry plants in the nation, but that many of the growers are careless in the growing and packing of them. The past season three large Shenandoah nurseries bought nearly a million of the Mullins plants. Early in July one of them called on Mr. Mullins and was very much impressed with his set-up, saying he was ready to stop looking for strawberry plants, that he had found them! He has ordered over a million of the Mullins plants for this season.

A large seed company in Florida is using these plants for their trade, as is a large nursery in Texas. Several leading nurseries in McMinnville, Tenn., are using them this season for their trade. The Florida company formerly got plants from a nearby competitor of Mr. Mullins, but changed to the Mullins plants last season in spite of their being \$1.50 per M higher. Florida growers chose these plants in spite of being able to get plants at \$3.50 per M cheaper, as they wanted to be sure of what they were getting!

Mr. Mullins is County Agricultural Agent at Chattanooga and had the help of the Tennessee College of Agriculture in securing the best plant stock that it was possible to find.

CHOOSE THESE PLANTS AND BE SURE OF GETTING THE BEST

Some varieties of strawberries and caneberries are in very limited supply. ORDER NOW, before this stock is all booked, after which prices will either advance or there will be no more of the variety to be had.

**YOU ARE URGED TO PLANT EARLY, AS EARLY
PLANTING GIVES SO MUCH BETTER RESULTS
THAN LATE PLANTING**

BRENTWOOD BERRY GARDENS

140 South Carmelina Ave.

Telephone ARizona 9-3496

Los Angeles 24, California

We exercise the greatest care to keep our varieties pure and true to name, and hold ourselves in readiness at all times to replace on proper proof all stock that may prove otherwise or refund the amount paid, but it is mutually agreed between the purchaser and ourselves that we shall not be liable for any amount greater than the original price.

WHAT NURSERIES SAY:

- Oakland: "We were well pleased with stock purchased from you during the past two years, and would like to place our order for coming fall and winter with you."
- Camarillo: "We were well pleased with your handling of our order last year and we know that we can depend on you to give us the same quality of stock that we have received in past years."
- Auburn: "We like your stock and service." They got Boysenberries and Youngberries.
- Oceanside: "The Klondike and Gem berries came and they look like lovely plants."
- Gardena: "The plants arrived in very fine shape from Tennessee."
- Montesano, Wash.: "I received the 500 Streamliner plants and was very much satisfied with them. They were such nice large, well-rooted plants."
- Venice, Calif.: "Those sure were nice plants; have had several customers comment on what nice plants they were." He got Gem and Klondike and commented on Gem especially.
- Portland, Ore.: "I must say we are more than satisfied with your service and so here goes for some more. . . . Your stuff arrived well and really looks good."

WHAT GROWERS SAY:

- Edward A. Biery, La Mesa "We have been MOST HAPPY with the STREAMLINER STRAWBERRY plants you sold us last January. It has been a great joy to see them produce so quickly and such glorious size berries. . . . When is the best time to place order for these plants? We have some inquiring friends."
- R. W. Isbill, Acampo: "I purchased 1000 Streamliner strawberry plants (from you) last year and am very well satisfied with them. They are the best all-around berries I ever raised and yield as good. They are very large in size. The color and flavor are excellent. They have good aroma and are as firm as the average strawberry.
- "We have had a lot of compliments from people who have bought our Streamliner berries. We are picking more berries at present than we have at any time this summer." Dated Oct. 3. Mr. Isbill ordered 5,000 more of these plants for last season.
- Cy Ramage, Chula Vista: "The Streamliner right now (Oct. 5, 1946) are covered with blossoms and berries of all sizes. When ripe they are very large and bright and have a wonderful color. We have about seven acres of Klondikes and they are the finest in this territory. All our plants came from you and they are very good and free from disease."
- A Gold Beach, Ore., grower: "Out of twelve orders to twelve nurseries in six states, from Maryland to Oregon, there were two extraordinarily well packed shipments, the one from Maryland and yours, the root systems well developed and growing ahead of nearby purchased plants."

KLONDIKE STRAWBERRY

This has been the leading commercial strawberry in Southern California for many years. It is a large, red berry of good flavor though somewhat acid, quite productive, good shipper and sells well on the market. Mr. Mullins reported his strain of Klondike outyielded Blakemore in Tennessee, the reverse of the usual rule there.

BLAKEMORE STRAWBERRY

This is an early berry, light red to the center. The color does not change on standing nor when canned. It is a great favorite with canneries and is excellent for quick freeze. Being very firm, it is one of the best of all for shipping. A California grower says it yields better than Klondike and over a longer period, being both earlier and later, is firmer and a better shipper than Klondike. Ninety-nine per cent of the acreage in Arkansas is now said to be Blakemore, where Klondike used to be the leading berry. Blakemore is also very popular in Tennessee.



A Field of Strawberries

MARSHALL STRAWBERRY

This berry is very popular and extensively grown in the Pacific Northwest and Northern California. It has a beautiful red color and a very delicious flavor and is very prolific and a good cropper. Extensively used for canning and quick freezing.

BANNER STRAWBERRY

Grown extensively in Central California and San Joaquin valleys. A berry of delicious flavor, bright red color and very productive. Used extensively for quick freezing.

OREGON PLUM STRAWBERRY

Said to be the same as Marshall. A San Fernando grower reports wonderful success with this variety, saying it yielded a wonderful crop of extremely large, very delicious berries. The leading variety in the Sacramento Valley.

(See Prices on Page 19)

BRIGHTMORE STRAWBERRY

Bulletin 416, of the Agricultural Experiment Station, Oregon State College, Corvallis, says: "The BRIGHTMORE strawberry was named and introduced in 1942. In tests it has outyielded other varieties under most conditions at Puyallup and Prosser, Washington, and at Hood River, Oregon. It has been productive except on the heaviest soils. It is a firm, bright-red variety especially well adapted for freezing and preserving. Preserves made from Brightmore have been superior to those made from Marshall even though the fresh-fruit flavor of Brightmore is not so high as that of Marshall."

The color is between Blakemore and Marshall and they are remarkably bright and glossy, and are firm and sweet, and it is said to be very resistant to mold, more so than other varieties, and free from crinkle and yellows.

Write to Clerical Exchange, Oregon State College, Corvallis, Oregon, for: Station Bulletin 416, New Berries from Oregon's Plant Breeding Research, which describes Brightmore strawberry, Willamette raspberry, etc.

SIERRA STRAWBERRY

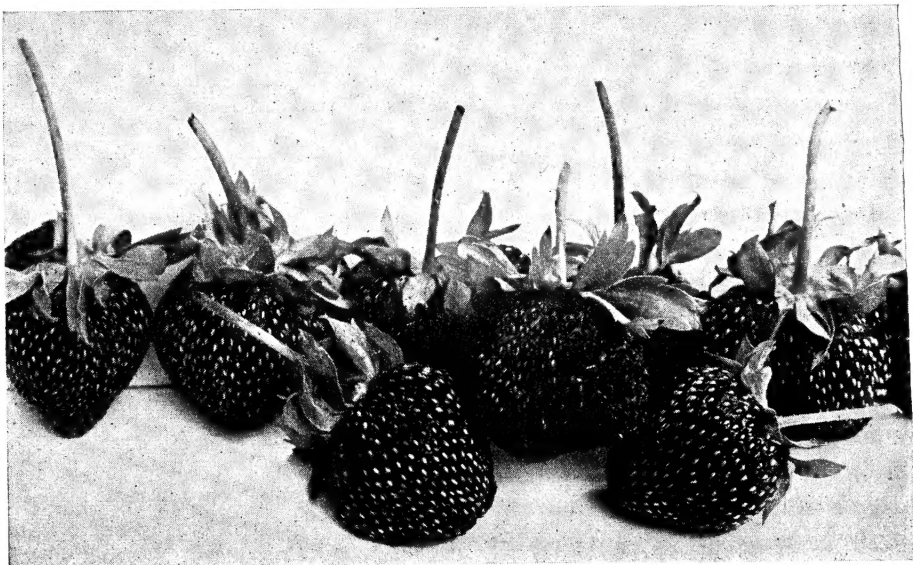
Considered the best of the new U. of C. varieties for the foothill region. The variety is late and at times produces most of the spring crop late enough to escape the rains that often spoil the early crop. It is a very good plant maker and has fair longevity compared with other varieties. Color, medium red usually, with good gloss, which gives a good appearance; this holds well after picking. Berries large to medium, and the dessert quality is good, with slight aroma. See item on Shasta.

SHASTA STRAWBERRY

Shasta is said to have "reacted favorably in all test plantings along the central coast, where it has been outstanding for high production in the summer and fall," according to Leonora A. Hohl, of University of California, in Quick Frozen Foods for June, 1947. (Strawberry Freezing in California.) "This along with Sierra and Lassen have practically completely replaced Banner in this district. Shasta has become the most popular variety for the fresh fruit market. The bearing season for Shasta usually starts the last week of April. Production is fairly continuous through the summer and fall. . . . The frozen Shasta and Sierra were the best of the five varieties. Shasta's particular advantages were good flavor and aroma, fairly good appearance and fair texture retention on thawing.

"The frozen Sierra was one of the two best varieties, with flavor and appearance in its favor and with rather soft texture and faint aroma against it. . . ."

Send to Publications Office, College of Agriculture, Berkeley 4, Calif., for Bulletin 690, The Shasta, Sierra, Lassen, Tahoe, and Donner Strawberries. Order by number only: B 690.



(See Prices on Page 19)

MISSIONARY STRAWBERRY

This variety is sometimes called CAROLINA and on the Los Angeles market is known as "MISSION." It has long been a commercial variety in Southern California and is a little earlier than Klondike on light soil. Grown extensively in Florida, where it is the leading strawberry.

AROMA STRAWBERRY

This is a late variety, large, very productive and a good shipper. Its first crop comes in at about the end of the first Klondike crop, thus filling in the gap between Klondike's crops. Has been a successful commercial berry in Southern California for many years.

PREMIER STRAWBERRY

Premier has long been a standard variety in the East. Very early, it is said to be a great money maker with its early crop of berries, bringing top prices. Said to be very healthy and deep rooted, an excellent producer of large, bright red berries of firm texture.

DUNLAP STRAWBERRY

An old standby variety, still extensively planted in the East and regarded as one of the finest of strawberries. Berries of medium size, dark red and pointed in shape, highly flavored and ideal for canning. Plants said to be vigorous and tremendous yielders and resisting drouth and cold weather better than most varieties.

COLEMAN'S PRESIDENT STRAWBERRY

This new variety originated in Washington, where it is said to be in great demand for quick freezing, one processing firm, it is said, having contracted for 500,000 of the plants to distribute to its contract growers.

Processors want a berry which, after freezing, will thaw out and be as much like a garden-fresh berry as possible. The new Coleman's President is said to meet these requirements better than any other berry on the market. After thawing it is said to be solid and firm, has a good color, and maintains its original sweetness and flavor. Shrinkage is practically nil, either from freezing or canning.

We saw these berries growing at Fresno last spring, and the plants were simply loaded with blossoms and berries of all sizes from blossoms up to ripe berries. Mr. Sutton, the grower, writes that the main first crop lasted seven weeks, and they took off four tons from three-quarters of an acre, equal to 1,000 trays of 12 baskets each.

A Fresno man who bought four crates of these berries from Mr. Sutton for home freezing, wrote him: "We opened some of your frozen berries we have in the sharp room, and the RICH, SWEET FLAVOR, TASTE AND FIRM QUALITY COLEMAN'S PRESIDENT STRAWBERRIES HAVE JUST CANNOT BE BEATEN."

Mr. Sutton wrote that they got 50c per tray over the market for these berries in Fresno.

TENNESSEE BEAUTY STRAWBERRY

In tests in Kentucky, this variety stood first in yield among shipping varieties. It is a late variety, about the same time as Aroma, but outyielded Aroma three to one, and is a more attractive, firmer shipping berry than Aroma. It is expected to rapidly supplant Aroma, not only outyielding it but being such superior in quality.

TENNESSEE SUPREME STRAWBERRY

Mr. Mullins says of this berry: "They are replacing a good portion of the Blakemore acreage here. They are of excellent quality and give extremely high yields, one grower here reporting more than double what the better growers here do with Blakemore. It is a good quick freeze berry and seems to be very resistant to disease. About everything I can say for this berry is in its favor." It is a little soft for distant shipping, but is a fine quality, dark red berry of good size that is well adapted for home use or quick freezing. It yielded more than any of the others in the Kentucky tests.

TENNESSEE SHIPPER STRAWBERRY

This is a high yielding berry and one of the best for shipping, being next to Tennessee Beauty in yield among shipping berries in the Kentucky tests. In quality it is not so good as Tennessee Beauty or Tennessee Supreme, but surpasses the latter as a shipper.

STREAMLINER STRAWBERRY

Everbearing

This outstanding new everbearer originated in the mountains of northeastern Oregon at an elevation of 3,000 feet, where it gets very cold, so it is very hardy. The berries are extremely large and hold their size well throughout the season; conical, almost round in shape, attractive, deep, glossy red in color both fresh and preserved, very sweet, requiring very little sugar, delicious in flavor and highly aromatic. It is remarkably productive and very firm, making it a good shipper and standing up on the market better than other everbearers.

It makes a good fruiting bed and the runner plants yield a good crop the year plants are set. Its spring crop is said to compare favorably with leading standard varieties, and it continues to produce until frost. It is said to be the most disease-free plant known, patches four years old being in perfect condition, free of disease and in full production.

Leading growers who have thoroughly tested Streamliner declare it to be the best of all the everbearers. It is excellent for eating fresh, and being firm and a rich red color throughout is highly desirable for canning and quick freezing.

See photo on cover.

BRUNES MARVEL STRAWBERRY

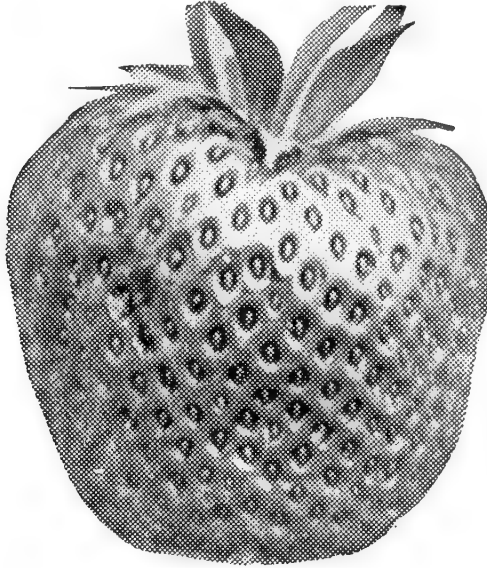
Everbearing

An Oregon grower reports these berries are very sweet with little acid, and in flavor they consider them equal to any of the everbearers and better than some of the leading ones, and good keepers. The vines he says are very thrifty and healthy. Also says: "They did not bear as heavily or have as large berries as the Rockhill the fore part of the summer, but now (Sept. 9) the Rockhill are not so large and are falling off in production while the Brunas Marvel are setting on lots of berries now. . . . I do believe the Brunas Marvel have less acidity than any berry we have grown and the plants are a clean healthy grower, and on year old plants they ripen very early in the season, but with us they do not bear heavily clear through the season. After the spring crop on the year old plants they take a rest and do not produce many berries till later in the season. . . . They continue to produce late in the fall."

ROCKHILL STRAWBERRY

Everbearing

This is a runnerless variety, seldom making runners. A grower wrote us that out of 70,000 plants he had only 500 runner plants. It is popular on this Coast, productive, with large red berries of a very delicious flavor. It produces a full crop the same year as planted. It makes large crowns and being practically runnerless is propagated by crown divisions. For this reason the price of plants remains high.



GEM STRAWBERRY

Everbearing

This is an excellent berry and does well in California as well as elsewhere. It has a good red color, good size and excellent flavor, bearing a heavy early crop of beautiful, firm berries and continuing to produce up to frost. Mr. Mullins has a new stock of Gems which he wrote looked wonderful and had made about twice the growth of those he had last season.

MASTODON STRAWBERRY

Everbearing

Mastodon has for years been a popular berry, especially in the East, as well as on this Coast. It produces a good crop the summer and fall of the year planted, and the following spring yields a crop equal to many spring varieties.

EVERMORE STRAWBERRY

Everbearing

Introduced under name of Minnesota 1166. Vigorous grower, making a good fruiting row, with large, attractive berries throughout summer and fall with a heavy crop the following spring. The flavor is not so good as some varieties.

WASHINGTON RED RASPBERRY

This outstanding variety originated in Washington. The berries are slightly larger than Cuthbert and have a marvelously delicious flavor, being sweet and delicately flavored and lacking the slight bitterness sometimes noticed in Cuthbert. Resembles Cuthbert in appearance, but is firmer and a shade lighter red, and a little earlier than Cuthbert. The harvest lasts several days after the Cuthbert harvest has ended, and the yield is exceptionally heavy. Unlike Cuthbert, it is unusually hardy, and not subject to winter kill. Has won high praise from growers in different parts of California, where it is said to yield as well as Cuthbert, which has long been the main crop raspberry here. Used extensively by quick freezing plants.

WILLAMETTE RED RASPBERRY

This unusually fine berry originated at the Oregon State College at Corvallis. We have found this raspberry to have a wonderful flavor, meaty, juicy and very large, being said to be the largest red raspberry. The berries are unusually firm and hold up well on standing, as well as after canning and freezing. The season is early and long and the yield is very heavy, an Oregon grower saying it far outyields the Washington. At Oregon State Experiment Station it outyields three other leading varieties.



SUNRISE RED RASPBERRY

This is an exceptionally early berry, large in size, very hardy and very resistant to disease. Said to be two or three weeks earlier than Cuthbert, but the season ends about with Cuthbert. In color, flavor and dessert quality they are said to be so much alike that it would be hard to tell them apart. A Santa Monica grower said they produced up to Christmas.

(See Prices on Page 19)

CUTHBERT RED RASPBERRY

This berry has often been called "Cassberry" here and has long been the main crop red raspberry here. It is of good size, good color, good flavor, good raspberry aroma, fairly firm and a fairly good shipper.

INDIAN SUMMER RED RASPBERRY

Like one of its parents, the Lloyd George, this berry bears two crops, a spring or summer crop and a fall crop. The quality is good and the season very early. The plants are vigorous, upright, hardy, healthy and productive. The fruit is large, juicy, tender, mild subacid. Not subject to mosaic disease and is extremely hardy, even in Canada. A grower in this county got a few of these plants two years ago and in the fall phoned me that they were wonderful, saying they had grown large and branched out and had a fine crop of large, wonderful, delicious berries, and he wanted 200 or 250 more; when I got them in he took 500.

LLOYD GEORGE RED RASPBERRY

A very excellent raspberry, grown successfully on this Coast for years, and is one of the parents of Washington, Willamette and Indian Summer. On this Coast it bears two crops a year, like Indian Summer. It is of large size, delicious flavor, with small seeds and very fine texture and is very productive. A little too soft for long distance shipping, but is one of the finest raspberries for jams, jellies and preserving, as well as eating fresh.

MUNGER BLACK RASPBERRY

This blackcap is well adapted to California conditions and has been the main commercial blackcap here for a number of years, with big, juicy berries.

CUMBERLAND BLACK RASPBERRY

The Cumberland blackcap has been declared to be the finest blackcap on the market. According to the bulletin of the California College of Agriculture: "Cumberland is considered the best black raspberry for the Southwest. It has sold well on markets in Southern California. The plant is vigorous and productive but normally yields about 25 per cent less than red varieties. The fruit is large, roundish conical, firm, and of good quality. The season is late and long." Blackcaps bring more money on the market than red raspberries.

SODUS PURPLE RASPBERRY

This new purplecap is extremely large, firm, medium purple in color, sprightly and good in quality. It is said to surpass all others in growth of cane and in production, is extremely vigorous, hardy and drought resistant. It does well in California and is said to be precocious, yielding berries the same year as planted if given good care. It ripens later than Washington and Cuthbert, thus extending the raspberry season.

YOUNGBERRY

Identical in color with the Boysen but not so large, a little firmer and a week or two earlier. It will make a little more juice than the Boysen.



A Box of Boysenberries

BOYSENBERRY

This popular berry is very large and very productive and has a sprightly and delicious flavor. In color it is very dark red, almost black when fully ripe, being identical in color with the Youngberry, but larger, more highly flavored and less seedy. It yields over a period of six to eight weeks. It is very highly prized for juice, jam, jelly, canning and quick freezing. It is a week or two later than the Youngberry.

THORNLESS BOYSENBERRY

This variety is a sport from the thorny Boysen and is very productive, although smaller than the thorny Boysen. Being thornless makes it much easier to pick. It starts ripening a week or two earlier than the regular Boysen, about the same time as the Youngberry. It is practically identical with the Thornless Youngberry in size and earliness, but if there is any difference it is in favor of the Thornless Boysenberry, which yields perfect berries and a large crop of them. So there is no object in planting Thornless Youngs.

(See Prices on Page 19)

NECTARBERRY

This is a very fine berry, thought to be a chance seedling, probably from the Youngberry. It is almost as large as the Boysenberry, surpasses it in yield and is a week or two earlier. A grower near El Monte had Youngs, Boysens, Nectars and Logans. He has taken out the Youngs, as the Nectars were just as early, much more productive and larger than the Youngs. Last summer the vines were a great mass of fine, large berries which was a sight to behold. They are very delicious fresh, in pies, canned, made into jam or frozen. It is a wonderful berry. In behavior it resembles the Young, making it's crop and then stopping, not having a small second crop like the Boysen.

LOGANBERRY

This berry is large, long and an attractive deep red color. It originated in California and has been grown on this Coast for many years. Although it is somewhat sour it is highly prized for jam and jelly making and for juice, as well as for pies.



THORNLESS LOGANBERRY

Patented

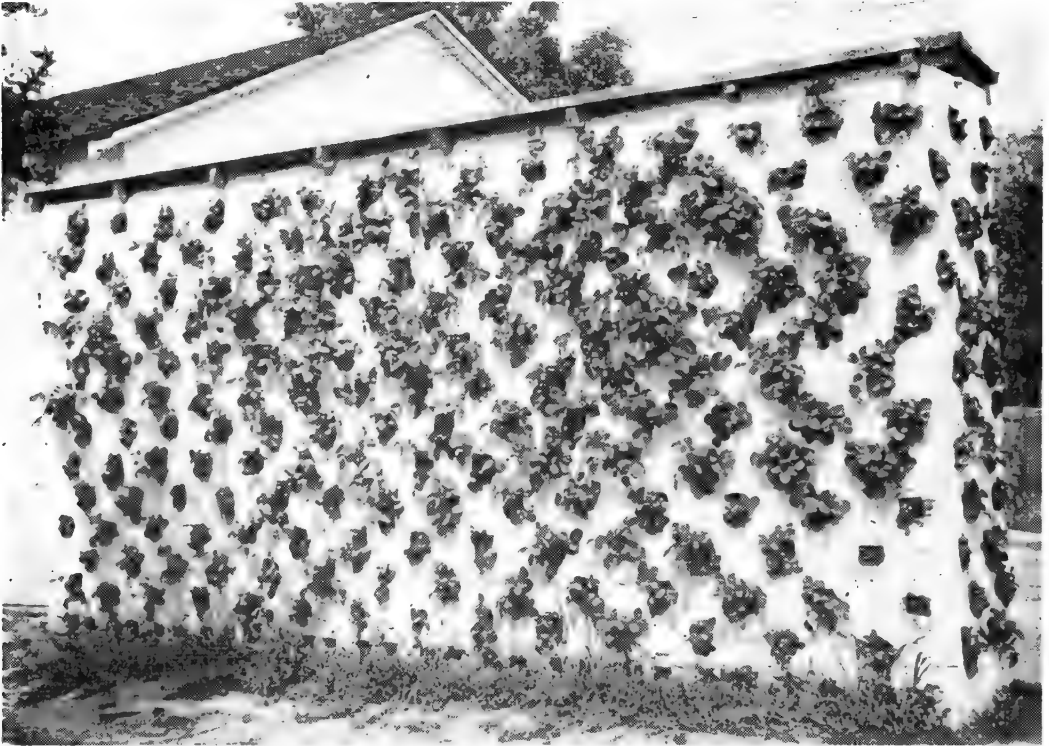
This is a sport of the thorny Logan and is similar to it except that it is absolutely free from thorns, which makes picking so much easier.

(See Prices on Page 19)

CHERRY RED RHUBARB

Everbearing

A beautiful, red rhubarb which originated in this county and is a direct descendant of Burbank's Crimson Winter Rhubarb. It is of large size and very highly productive, producing a crop within a few months after planting and yielding several crops in a season. It does not go dormant like most varieties, but is everbearing, producing the year around under favorable weather conditions, and a planting will last for years. It is so tender that it does not require peeling, and is well flavored and less acid than some sorts and requires less sugar.



THE STRAWBERRY WALL MANUAL

By G. P. Hill

Strawberry wall avoids ground spoilage, outwits birds and conserves space.

Mr. Hill tried other methods of growing strawberries for home use, finally trying the strawberry barrel, but "the inadequacy of the strawberry barrel for quantity production was immediately apparent. The few plants which the barrel supported produced an amazing quantity of fruit, but the capacity was limited and the life of a barrel filled with moist earth is short at best.

"From these experiences and observations was developed the idea of the strawberry wall. This is a permanent structure, or as permanent as cement can make it," not rotting out like a barrel. And it keeps the berries off the wet ground and the bird can't eat them as they find no roosting place.

This manual contains:

1. Full step by step directions for construction.
2. List of the few items of material required . . . no lumber needed.
3. How to mix the soil and fertilizer for filling the wall.
4. How to install simple watering and drainage system.
5. Full instructions for setting the plants and their care.

Order Your Strawberry Wall Manual Today

Price Only \$2.00 Postpaid, Plus Sales Tax

We use and Recommend

The balanced fertilizer containing complete nutrients plus plant hormone

PLANT-CHEM SALTS

A scant spoonful makes a gallon of rich FERTILIZER

For Use In Your Garden and Starting Seeds • Trees • House Plants Slips and Cuttings • Shrubs • Flowers Transplanting • Ferns • Cacti Vegetables • Bulbs • Green Houses

Pour it on • Watch 'em Grow!

PRICES ON PLANT-CHEM

PLANT-CHEM	PLANT-CHEM ACID FOOD	LAWN-CHEM
100 gal. size.....\$ 1.00	A- 100 gal. size.....\$ 1.00	L- 400 gal. size.....\$ 1.50
400 gal. size..... 2.00	A- 400 gal. size..... 2.00	L-1200 gal. size..... 4.00
1200 gal. size..... 5.00	A-1200 gal. size..... 5.00	L-5000 gal. size..... 12.00
5000 gal. size..... 15.00	A-5000 gal. size..... 15.00	

A Long Beach customer wrote on June 24: ". . . I fertilized a few days later between plants (beans and peas) with Plant-Chem and I never saw anything grow like those beans and peas. I have two pickings from them and beans and peas are so tender and big and grow so fast. So I have planted cabbage, radishes, turnips, beets, kale, watermelon, cucumbers, corn and it is wonderful how they grow." He said his soil is river sand over six feet deep and poor soil for growing.

On July 24 he wrote: "The vegetables I used Plant-Chem on is doing wonders, are growing and producing heavy crops. My friends ask me what I did to make them grow and look like they do."

Plant-Chem Salts

A Balanced Fertilizer

PLANT-CHEM comes in concentrated dry form for easy handling, and is used in liquid form for better results in starting seeds, cuttings or transplanting and feeding to maturity all kinds of plants, in any kind of soil, in sand or hydroponically.

PLANT-CHEM salts contain PLANT-HORMONE (for better seed germination and to start new feeder roots, cuttings, etc.), also 17 minor elements vital to the life, growth and productivity of plants, all in the properly balanced proportions with NITROGEN, PHOSPHORUS and POTASH, 21 in all. See analysis and directions on every package.

Plants fed with a full nutrient solution containing all the nutritional elements will produce fruits and vegetables containing these nutritional elements, which will greatly increase the health of those eating them. These elements are furnished in PLANT-CHEM.

Oliver Kehrlein, Official Garden Consultant, California Nurserymen's Association, says: "If all the growers and nurserymen realized how economical Plant-Chem was and that it contained all the necessary elements as well as those growth hormones which would insure them against damping off when germinating, and wilting when transplanting (thus providing better propagation), they'd all give up the old antiquated methods which 'were good enough for our grandfathers'."

Harry E. Nelson, Division of Horticulture, San Francisco Junior College, says: "A large number of our gardening classes have used your product during the war with complete success, and are very happy with the results obtained. . . . I hope that more people learn of the benefits to be derived from using complete salts such as Plant-Chem."

F. C. Baker, Ph.D. in Biology and Biochemistry with a minor in Plant Physiology from Cornell, says: "I think your **Plant-Chem Salts** produce by far the best balanced and most stimulating full-nutrient solution that I've ever seen."

(See Prices on Previous Page)

PLANT-CHEM SALTS

A Fresno grower wrote: "I thought you might be interested in a studied record of the use of Plant-Chem on four acres of Boysenberries in Fresno County.

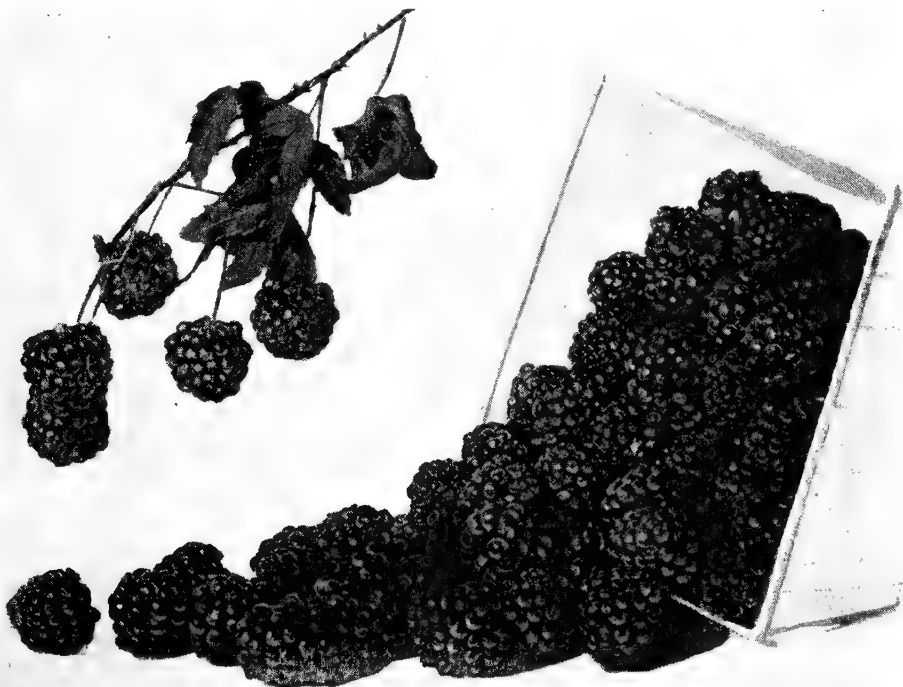
"Planted in February, 1946, no fertilizer was used until September, when we began using one pint of Plant-Chem to make a 50-gallon drum of concentrate. This was trickled into a stand pipe with a 4-inch discharge pipe from a 6-inch well (pump).

"I irrigated once a week, Plant-Chem was applied every second irrigation, or once every two weeks. Trickle of concentrate is regulated to consume the 50-gallon drum in two hours. The four acres require 150 gallons, or three pints of salts.

"There are sixty-three 300-foot rows of sixty plants each. It is problematical if this application is giving maximum results, but results are far exceeding most neighborhood acreage not using Plant-Chem, as pictures will confirm.

"This month of May while berries are forming and ripening, Plant-Chem is being applied once a week (irrigating twice a week). These one-year-old plants now have three-months-old new canes five and six feet long comparable to many other two-year-old plants. The same can be said of the number and size of berries and the tonnage per acre. We have used just 75 pounds in the nine months.

"For the enclosed check please ship another 25 pounds of Acid tolerant Plant-Chem."



A Box of Youngberries

REDUCED AIR FREIGHT RATES

The Eastern Air Lines now have two schedules per day direct from Chattanooga to the West Coast, with flight time of 19 to 20 hours to Los Angeles. It is no longer necessary to ship by railway express from Chattanooga to Nashville and from there by air, as was necessary last season, but shipment by air can now be made direct from Chattanooga, saving time and expense.

The air rates are lower, too. Here are samples: Per 100 pounds, to Phoenix, \$9.20; Salt Lake City, \$18.80; San Diego, \$19.65; Los Angeles, \$20.13; San Francisco, \$24.55; Sacramento, \$24.05; Portland, \$23.55; Seattle, \$23.55. Plus the usual cargo tax of 3 per cent.

Air shipment is recommended for plants to be shipped before plants are fully dormant, which is about November 1, and after the dormant period is over in the spring.

Air shipments can be packed lighter than rail shipments, due to the short time in transit, which will somewhat reduce the transportation cost by air.



BULLETINS

Write to Publications Office, College of Agriculture, Berkeley 4, California, for:

B 690—The Shasta, Sierra, Lassen, Tahoe, and Donner Strawberries. Order by number only.

X 80—Bush Berry Culture in California. Order by number only.

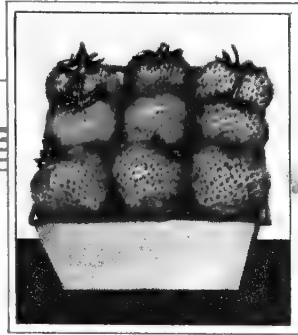
The Strawberry in the Home Garden.

Ask for the current list of bulletins.

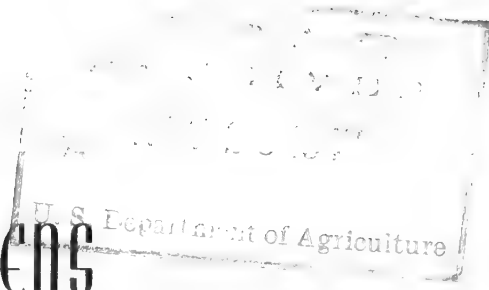
Write to Clerical Exchange, Oregon State College, Corvallis, Oregon, for:

Station Bulletin 416—New Berries from Oregon's Plant Breeding Research. This describes Brightmore Strawberry and Willamette Raspberry, among others.

Ask for their current list of bulletins.



BRENTWOOD BERRY GARDENS



HIGH GRADE PLANTS OF SUPERIOR VARIETIES

Strawberries Caneberries Rhubarb

ARIZONA 9-3496

140 S. CARMELINA AVE.

Los Angeles 24, CALIFORNIA

EXCLUSIVE WESTERN AGENT FOR
MULLINS PLANT FARM, CHATTANOOGA, TENNESSEE

WHOLESALE PRICE LIST — 1947-48 — DEALERS ONLY

TERMS: NET CASH WITH ORDER, UNLESS CREDIT IS ESTABLISHED

PRICES SUBJECT TO CHANGE WITHOUT NOTICE -- OFFERINGS SUBJECT TO PRIOR SALE

THE FOLLOWING STRAWBERRY PLANTS READY ABOUT NOV. 1

THE FOLLOWING PLANTS F.O.B. CHATTANOOGA, SHIPPED DIRECT TO YOU

CERTIFIED STRAWBERRY PLANTS

	500	1000		500	1000
Aroma.....	\$ 4.50	\$ 8.00	Oregon Plum.....	\$ 5.00	\$ 9.00
Banner.....	5.00	9.00	Shasta.....	5.50	10.00
Blakemore.....	4.50	8.00	Sierra.....	5.50	10.00
Brightmore.....	5.00	9.00	Tennessee Beauty.....	5.00	9.00
Coleman's President....	5.00	9.00	Tennessee Shipper.....	4.50	8.00
Klondike.....	4.50	8.00	Tennessee Supreme.....	4.50	8.00
Marshall.....	5.00	9.00			
GEM EVERBEARING.....	7.50	14.00	STREAMLINER EVERBEARING..	16.50	30.00

DISCOUNTS ON ABOVE: 25,000, 2½%; 50,000, 5%; 100,000, 7½%

CANE BERRIES

	100	500	1000
Youngberry.....	\$ 5.50	\$ 17.50	\$ 32.50
Boysenberry.....	6.00	20.00	37.50
Thornless Boysenberry.....	6.50	22.00	40.00

THE FOLLOWING PLANTS F.O.B. SANTA MONICA

EVERBEARING STRAWBERRIES

	POSTPAID	EXPRESS COLLECT
	100	500 1000
Rockhill.....	\$ 7.50	\$ 30.00 \$ 52.50
Rockhill CERTIFIED.....	8.50	35.00 60.00
Brunes Marvel.....	4.00	13.50 25.00

RASPBERRIES, ETC. EXPRESS COLLECT

	50	100	500	1000		50	100	500	1000
Washington.....	\$3.50	\$5.50	\$25.00	\$45.00	Munger Blavkcap..	\$3.50	\$ 5.50	\$25.00	\$ 45.00
Willamette.....	4.00	6.50	30.00	55.00	Cumberland "	3.50	5.50	25.00	45.00
Sunrise.....	3.50	5.50	25.00	45.00	Sodus Purplecap..	5.00	8.50	40.00	75.00
Cuthbert.....	3.50	5.50	25.00	45.00	Loganberry.....	4.00	7.50	35.00	65.00
St. Regis.....	3.50	5.50	25.00	45.00	Thornless Logan..	6.00	11.25	52.50	100.00
Indian Summer..	3.50	5.50	25.00	45.00	Nectarberry.....	4.00	6.50	30.00	55.00
Lloyd George....	3.50	5.50	25.00	45.00	CHERRY RHUBARB...	6.00	10.00	47.50	90.00

PLANTS GUARANTEED TO ARRIVE IN GOOD CONDITION DURING THE DORMANT PERIOD

SOME VARIETIES IN VERY LIMITED SUPPLY. ORDER NOW BEFORE STOCK IS ALL BOOKED.

REDUCED AIR FREIGHT RATES

Shipments can now be made by air DIRECT from Chattanooga to Western points, thus saving time and expense. Air shipments can also be packed lighter than rail shipments due to the short time in transit, thus making a further saving. Air shipment is recommended for plants to be shipped before plants are fully dormant, and after the dormant period is over in the spring.

Eastern Air Lines now have two flights per day DIRECT FROM CHATTANOOGA to West Coast points, with flight time of 19 to 20 hours to Los Angeles. Here are some of the rates per 100 pounds, from Chattanooga: Phoenix, \$9.20; Salt Lake City, \$18.80; San Diego, \$19.65; Los Angeles, \$20.13; San Francisco, \$24.55; Sacramento, \$24.05; Portland, \$23.55; Seattle, \$23.55. Plus the 3% cargo tax.

IMPORTANT! SEE OTHER SIDE!

BRENTWOOD BERRY GARDENS, 140 S. Carmelina Ave., Los Angeles 24, Calif.
Exclusive Western Agent for MULLINS PLANT FARM, Chattanooga, Tennessee

BEST PLANT STOCK POSSIBLE TO FIND

Mr. Mullins is County Agricultural Agent at Chattanooga and had the help of the Tenn. College of Agriculture in securing the best plant stock it was possible to find.

CERTIFIED STRAWBERRY PLANTS

The Mullins strawberry plants have been certified this season by the Tenn. Dept. of Agriculture Regulatory Division, assuring you of plants free of disease and insect pests and free of mixtures of varieties. **NO BETTER PLANTS CAN BE HAD!**

"BEST STRAWBERRY PLANTS IN NATION"

A leading nurseryman in Shenandoah, Iowa, told Mr. Mullins last year that eastern Tennessee produces the best strawberry plants in the nation, but that many of the growers are the most careless. Last season three large Shenandoah nurseries bought about 1,000,000 of the Mullins plants, and are buying them again this season.

STOPPED LOOKING FOR PLANTS! HAS FOUND THEM!!

One of them alone, who last season bought nearly 200,000 of them, has already this season bought over 1,000,000 of them. Mr. Mullins wrote of him July 7: "Mr. Welch was with me Thursday. He was very much impressed with our set-up, and said he was **READY TO STOP LOOKING FOR PLANTS! THAT HAD FOUND THEM!!** He said the other boys from Shenandoah would start coming this way for plants as they had gotten a sample of our plants last year." Another of them buys about 500,000 Mullins plants each year.

MOST NURSERIES SOLD OUT OF PLANTS

On Oct. 2 Mr. Mullins wrote: "People here have really gone wild. Most of them are sold out and are offering higher prices than they sold for. Some have committed themselves for more than they have and are trying to buy them." On Sep. 26 he wrote "The man who was here from Florida bought 2,200,000. One large nurseryman was here from Arkansas and bought 3,500,000, and another one from Arkansas bought 1,000,000. The shortage of plants is due to lack of rain this summer and fall.

KLONDIKES SCARCE! ORDER NOW!! "FIRST COME, FIRST SERVED"

Oct. 3. An order for 42,000 Klondikes from Calxico this week has reduced our supply of Klondikes to slightly over 200,000 still available. **ORDER NOW IF YOU WANT ANY!**

KLONDIKE OUTYIELDED BLAKEMORE

Mr. Mullins wrote Feb. 26: "I got a production report on my Klondike stock. The man I got my original stock from says he fruited them two years ago alongside some Blakemore plants. He said they yielded more crates per acre than his Blakemore. The reverse is usually true here. **DON'T YOU WANT THIS HIGH YIELDING STRAIN?**

WHAT NURSERIES HAVE WRITTEN US:

Oakland: We were well pleased with stock purchased from you during the past two years.

Camarillo: We were well pleased with your handling of our order last year and we know we can depend on you to give us the same quality of stock we received in past years.

Oceanside: The Klondike and Gem berries came and they look like lovely plants.

Gardena: The plants arrived in very fine shape from Tennessee.

Venice: Those sure were nice plants. Several customers have spoken highly in praise of them, especially the Gems. (He also got Klondike.)

Montesano, Wash.: I received the 500 Streamliner plants and was very much satisfied with them. **They** were such nice large, well rooted plants.

WHAT GROWERS HAVE WRITTEN US:

Gold Beach, Ore.: Out of 12 different orders to 12 nurseries in 6 states, from Maryland to Oregon, there were two extraordinarily well packed shipments, the one from Maryland and yours, the root systems well developed and growing ahead of nearby purchased plants.

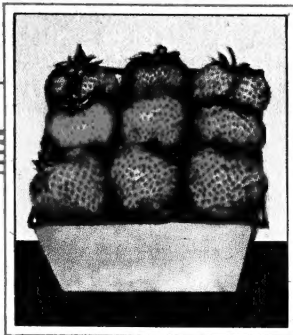
Chula Vista: Our 7 acres of Klondikes are finest in this territory. All our plants came from you, are very good and free from disease. Streamliners now (10-5-46) covered with blossoms and berries of all sizes. Very large and bright and have wonderful color.

Calistoga: The acre of Streamliners I planted brought me in \$2400.00 this year, 1947.

Acampo: Very well satisfied with 1000 Streamliner purchased from you in '45. Best all-round berries I ever raised. Very large, color and flavor excellent. Lots of compliments from customers. Picking more berries now (10-3-46) than any time this summer. (Bought 5,000 more last fall and reported he did not lose more than 1/2 dozen of them.)

Roscoe: Streamliner bought last spring everything claimed for them still picking fine berries. 11-11-46

RETAIL CATALOG, ILLUSTRATED, PARTLY IN COLOR, SENT UPON REQUEST



BRENTWOOD BERRY GARDENS

HIGH GRADE PLANTS OF SUPERIOR VARIETIES

Strawberries Caneberries Rhubarb

140 S. CARMELINA AVE.
LOS ANGELES 24, CALIFORNIA
Nov 1 1947

CERTIFIED STRAWBERRY PLANTS

The Mullins strawberry plants have been certified this season by the Tenn. Dept. of Agriculture Regulatory Division, assuring you of plants free of disease and insect pests and free of mixtures of varieties. NO BETTER PLANTS CAN BE HAD!

PLANTS SCARCE! MOST NURSERIES SOLD OUT!!

Due to lack of rain this summer and fall there is a great shortage of strawberry plants. Most nurseries have been sold out for some time, and Mr. Mullins would be sold out if he had not reserved what he had left for us some time ago.

On Sep 26 he wrote: "The man who was here from Florida bought 2,200,000 plants. A large Arkansas nurseryman was here and bought 3,500,000 plants and another one from Arkansas bought 1,000,000." On Oct 2 he wrote: "People here have really gone wild. Most of them are sold out and are offering higher prices than they sold for. Some have committed themselves for more than they have and are trying to buy them." On Oct 27 he wrote: "Just returned from a four day conference at Memphis. Found a bushel of strawberry mail when I returned. If I had the plants this year I could feather my nest."

KLONDIKES SCARCE! ORDER NOW!! "FIRST COME, FIRST SERVED!!!"

Our supply of Klondikes still unsold is now less than 100,000 plants. ORDER NOW IF YOU WANT ANY! The man from whom Mr. Mullins got his original stock of Klondike reported that his Klondike outyielded Blakemore alongside them, which is the reverse of the usual rule in Tennessee. DON'T YOU WANT THIS HIGH YIELDING STRAIN?

"TOPRANKING SUPPLIERS OF STRAWBERRY PLANTS"

A man in Oahu, Hawaii, wrote a few days ago: "I am indebted to Mr. W. Evans of Evans & Reeves (leading nurserymen) for referring me to you as top-ranking suppliers of strawberry plants."

"BEST EVERBEARING STRAWBERRY I HAVE SEEN YET"

A Seattle, Wash., man, in ordering some Streamliner plants, said: "My neighbor set out 100 plants from you last spring and they have done very well, the best everbearing strawberry I have seen yet, they are still bearing at this late date." (Oct 25 1947)

\$2,400.00 FROM AN ACRE OF STREAMLINER

On Oct 17 1947 a Calistoga grower wrote: "Have you any Streamliner strawberry plants? The crop of berries from the acre I planted brought me in \$2,400.00 this year. Everyone here is asking me for plants."

"STREAMLINER EVERYTHING CLAIMED FOR THEM"

A Roscoe customer wrote Nov 11 1946: "The Streamliner strawberry plants I bought from you last spring are everything claimed for them. Still picking fine berries."

CORRECTED RETAIL STRAWBERRY PRICES

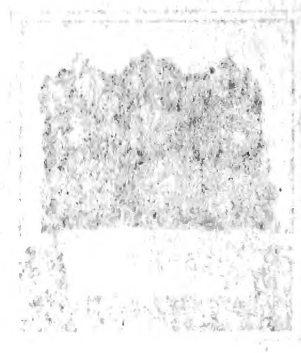
	500	1000		500	1000
Shasta.....	\$ 6.00	\$ 11.00	Brightmore.....	\$ 5.50	\$10.00
Sierra.....	6.00	11.00	Gem Everbearing...	10.00	18.00

Streamliner changed from adv. price of \$5 per 100 to \$6 as in catalog.

Yours for the best in berry plants,

W. A. LEE

THE UNIVERSITY OF CHICAGO



UNIVERSITY OF CHICAGO

1954

100

THE UNIVERSITY OF CHICAGO
LIBRARY

THE UNIVERSITY OF CHICAGO
LIBRARY

THE UNIVERSITY OF CHICAGO
LIBRARY

THE UNIVERSITY OF CHICAGO
LIBRARY

THE UNIVERSITY OF CHICAGO
LIBRARY

THE UNIVERSITY OF CHICAGO
LIBRARY

THE UNIVERSITY OF CHICAGO
LIBRARY

PRICE LIST OF PLANTS

The following plants shipped direct to you from
MULLINS PLANT FARMS, Chattanooga, Tenn.

TERMS: NET CASH WITH ORDER, PLUS SALES TAX IN CALIFORNIA

CERTIFIED STRAWBERRY PLANTS

Description on Page	POSTAGE PAID		EXPRESS COLLECT	
	50	101	500	1000
7 Aroma.....	\$ 2.00	\$ 3.50	\$ 5.00	\$ 9.00
5 Banner.....	2.00	3.50	5.50	10.00
5 Blakemore.....	2.00	3.50	5.00	9.00
6 Brightmore.....	2.00	3.50	5.00	9.00
7 Coleman's President.....	2.00	3.50	5.50	10.00
5 Klondike.....	2.00	3.50	5.00	9.50
5 Marshall.....	2.00	3.50	5.50	10.00
5 Oregon Plum.....	2.00	3.50	5.50	10.00
6 Shasta.....	2.00	3.50	5.50	10.00
6 Sierra.....	2.00	3.50	5.50	10.00
8 Tennessee Beauty.....	2.00	3.50	5.50	10.00
8 Tennessee Shipper.....	2.00	3.50	5.00	9.00
8 Tennessee Supreme.....	2.00	3.50	5.00	9.00
EVERBEARERS				
9 Gem.....	2.50	4.50	11.00	20.00
8 Streamliner.....	3.50	6.00	18.50	35.00

Discounts on Above: 25,000, 2½%; 50,000, 5%; 100,000, 7½%

	POSTAGE PAID	EXPRESS COLLECT	
	10	100	1000
CANE BERRIES			
12 Youngberry.....	\$ 2.50	\$ 6.50	\$37.50
12 Boysenberry.....	2.75	7.00	42.50
12 Boysenberry Thornless.....	3.00	7.50	45.00

The following plants F.O.B. Santa Monica

	POSTAGE PAID		EXPRESS COLLECT	
	50	100	500	1000
STRAWBERRIES EVERBEARING				
9 Rockhill.....	\$ 4.50	\$ 8.00	\$32.50	\$57.50
9 Rockhill Certified.....	5.50	10.00	37.50	65.00
8 Brunel Marvel.....	3.00	5.00	15.00	27.50

	POSTAGE PAID	EXPRESS COLLECT	
	10	100	1000
RASPBERRIES, ETC.			
10 Washington.....	\$ 2.50	\$ 6.50	\$ 50.00
10 Willamette.....	3.00	7.50	60.00
10 Sunrise.....	2.50	6.50	50.00
11 Cuthbert.....	2.50	6.50	50.00
11 Indian Summer.....	2.50	6.50	50.00
11 Lloyd George.....	2.50	6.50	50.00
11 Munger Blackcap.....	2.50	6.50	50.00
11 Cumberland Blackcap.....	2.50	6.50	50.00
11 Sodus Purplecap.....	3.50	9.00	80.00
13 Loganberry.....	3.00	8.00	70.00
13 Loganberry Thornless.....	4.00	15.00	105.00
13 Nectarberry.....	3.00	7.50	60.00
14 CHERRY RHUBARB.....	3.50	12.00	100.00

PRICES SUBJECT TO CHANGE WITHOUT NOTICE
OFFERINGS SUBJECT TO PRIOR SALE

N.B.: California Customers Add 2½% Sales Tax—In Los Angeles, 3% Sales Tax.
Nevada Orders should include 25c for inspection here, required by the State of Nevada.
Plants Are Guaranteed to Arrive in Good Condition During the Dormant Period.

BRENTWOOD BERRY GARDENS

140 S. Carmelina Avenue

Telephone ARizona 9-3496

Los Angeles 24, California

Streamliner
The Perfect Strawberry
for every use.



BRENTWOOD BERRY GARDENS
140 South Carmelina Avenue
LOS ANGELES
CALIF.